



# TRASH TALK from REPUBLIC Services

Answers to Questions About Your  
Residential Trash Collection  
Village of Holly

## WELCOME

Let us take this moment to thank you for your business! In order to serve you better, we have prepared a list of guidelines for your disposal needs. Please take a moment to review our procedures. By doing so, you will know what to expect from our staff each week as we service your home.

## CUSTOMER SERVICE

For any service issues or to schedule a special pick up, please call the Village offices. We will contact the Republic representative for you.

**248-634-  
9571**



## YOUR SERVICE INCLUDES

Unlimited household trash, yard waste and recyclables. Please do not put trash in cardboard boxes or loose trash in trash containers. **Limit all containers and bags to no more than 40 pounds.**

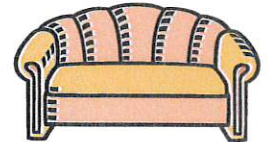


## PICK UP SCHEDULE

Please have your trash at curbside no later than 6:00 am. We are closed on the following holidays: New Year's Day, Memorial Day, Fourth of July, Labor Day, Thanksgiving Day and Christmas Day. Since we are closed on these holidays, collection is re-scheduled one day later than regular service for each day in the week following the holiday.

## SPECIAL PICK UPS

Large items are handled through Customer Service. Please call us at least one (1) day prior to your pickup day to arrange removal of appliances, bulky items, construction debris, furniture and carpet. 800-858-0089.



## MISSED PICK UPS

If you feel your stop was missed, please contact the Village offices. If it was an error by Republic Services, they will be happy to send a truck back to your home.

## HEAVY SNOW

Trucks will be sent out on schedule except in extreme conditions. Place trash on TOP of snow. Bags and cans must be accessible from the road. If trash is frozen to the ground the driver cannot take it. Some services may be temporarily suspended due to weather/road conditions.

## RECYCLING PROCEDURES

Republic Waste Services appreciates your concern for the preservation of the environment. In response, we have developed a curbside recycling program to reduce the amount of materials that enter landfills. Recyclable products include:

- ✓ Cardboard – flattened no larger than 2' X 2' cut and tied
- ✓ Magazines, catalogs, newspapers, papers bags and telephone books
- ✓ Plastic jugs and bottles marked with a #1 or #2 – must be crushed
- ✓ Glass bottles and jars – clear, brown, green and blue only
- ✓ Metal – cans, pie tins, metal lids, aluminum trays, metal clothes hangers and other small metal items are accepted

## RESTRICTIONS

The following items are not allowed in our vehicles. Please be sure they are not included in your weekly trash.

- Liquid paint, pesticides, gasoline, oil
- Gas cans, disposable LP gas tanks
- Cement, rocks and bricks
- Syringes, infectious hospital waste
- Liquid solvents and glue
- Car batteries, automotive parts



## YARD WASTE PROCEDURES

Michigan law requires that yard waste be disposed of at approved compost facilities rather than in landfills. Yard waste includes grass clippings, leaves, garden debris, small branches/shrubbery less than 4" in length and no larger than 2" in diameter (must be bundled and tied)

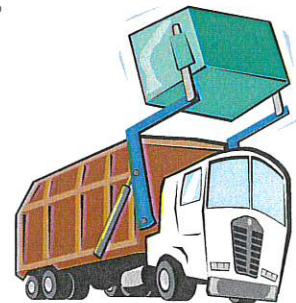
Yard waste will be accepted in brown paper lawn and garden bags or loose in trash cans up to 30 gallons clearly marked "COMPOST"

We do not accept the following:

- ❖ Straw or hay
- ❖ Apples
- ❖ Logs, tree stumps
- ❖ Dirt, rocks, sod
- ❖ Compost in plastic bags



**Compost season begins the first week of April and runs through the end of November**



## DUMPSTER RENTALS

Republic Waste Services has a wide variety of dumpster sizes for commercial, industrial or for your larger residential clean-ups or construction needs. Please call Republic Waste Services for details